



ARE YOU ALREADY
SLEEPING
FLEXIMA[®]?



DESIGNED TO GIVE YOU A RESTFUL SLEEP, EVERY NIGHT.



www. FLEXIMA® .com



DI Dr. Alfred Kinz *CEO*
Mag. Wilhelm Bretis
Founder & CEO

A third of your life deserves the best.

Have you ever wondered how many hours of your life you actually spend in bed? It's about 3,000 hours per year – that's a third of your lifetime. Reason enough to give sleep the attention it deserves.

With a FLEXIMA® mattress, you create the ideal conditions for restful sleep.

Our special point-elastic suspension system adapts individually to your body – for perfect lying comfort in every sleeping position.

We manufacture with responsibility and passion:

- exclusively pollutant-free materials
- no animal-based components
- preferably sourced from regional raw materials

In our own factory in Carinthia, we guarantee uncompromising quality – from the idea to the finished product.

Our patented spring system was developed in cooperation with Austrian engineering firms and universities – for sleeping comfort made in Austria.



“We chose a premium double mattress including a zip-on topper... We are extremely satisfied with the advice, the price, and the fast delivery! Our back pain has almost disappeared, and thanks to the thermal regulation and ventilation from the spring elements, there is no heat buildup. Sweating is no longer an issue! We would never have expected such wonderful results!”

Anita

Scan the QR code
and view our
Google reviews.



Scan me!

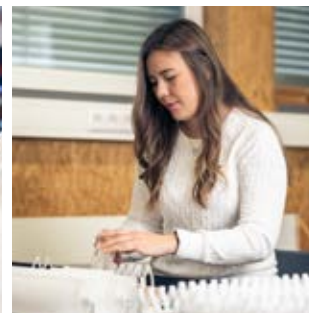


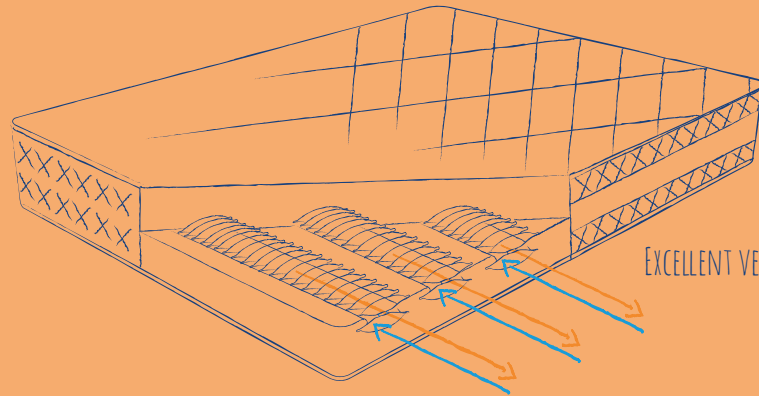
PRODUCTION

QUALITY FROM AUSTRIA

Each FLEXIMA® mattress is handcrafted with great care and passion by our dedicated team in St. Andrä – both custom-made and in all common standard sizes for your home. Our patented FLEXIMA® spring system – *the innovative core of each mattress* – is entirely produced in-house. The injection-molded parts come from our own production – for uncompromising quality and technical precision.

Our innovative system is patented in numerous countries worldwide – and internationally stands for quality “Made in Austria”.





A FLEXIMA® breathes with you. With every movement, you push **out moist, warm air from the mattress core.** This creates your own microclimate in bed, preventing persistent moisture.

THE CORE

FLEXIMA® SPRING ELEMENTS

Material

The FLEXIMA® spring elements are produced using high-tech plastic through injection molding without the use of plasticizers.

Sustainable

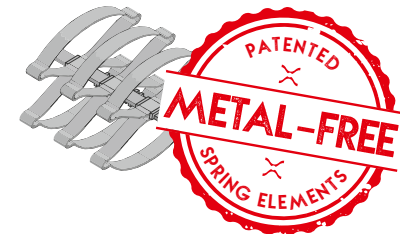
At the end of its lifespan, the mattress can be disassembled by material type (cover, foam, plastic) for proper recycling.

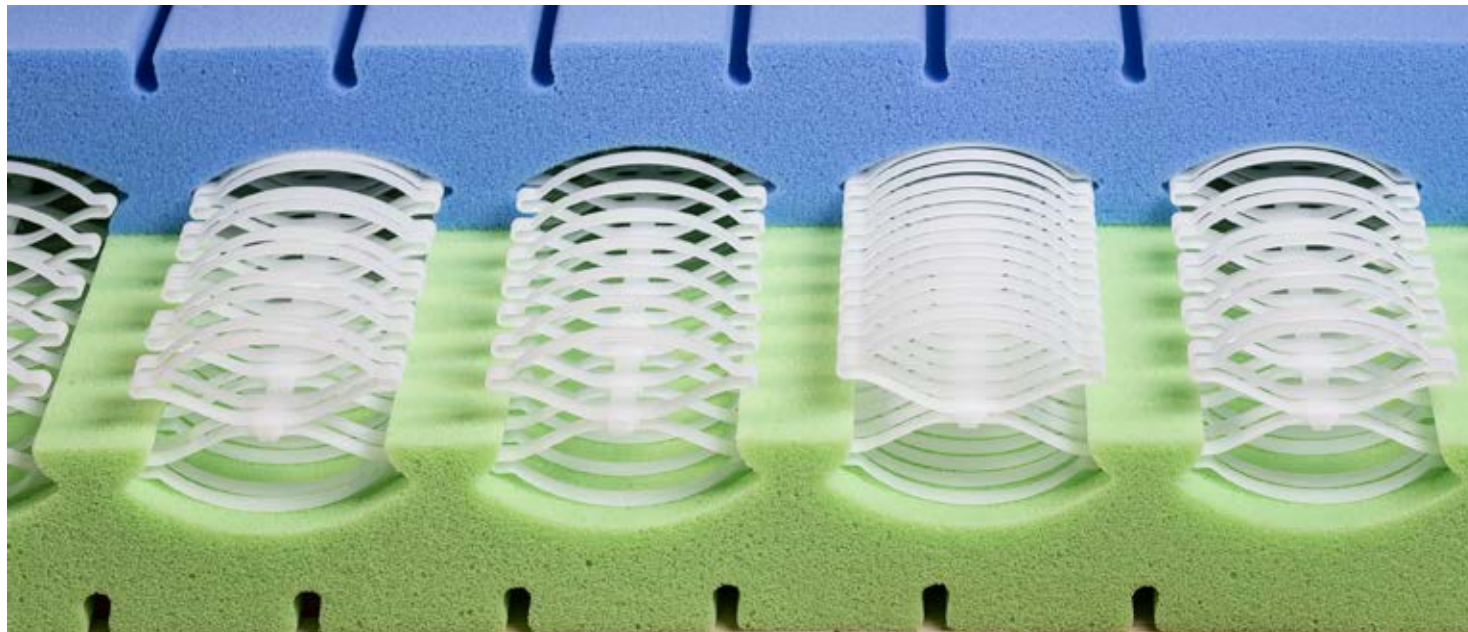
Hygienic

Bacteria and mold can form in damp mattresses. A FLEXIMA® dries quickly thanks to the continuous hollow spaces.

Flexible

A FLEXIMA® system can be built into various mattress heights, firmness levels, and shapes.





WEIGHTLESS DREAMS

VARIABLE SUPPORT ZONES

The cleverly integrated spring elements in every FLEXIMA® mattress ensure variable support zones – exactly where needed. The number of elements per support strip can be flexibly adjusted – even retroactively.



Scan me!

Scan the QR code and
watch the video instructions
for easy firmness adjustment!



1

Open the TENCEL® cover



2

Unzip the inner cover



3

Choose the zone to be
modified



4

Change the number of
spring elements

THE MATTRESS

THE FOAM

Only **emc® foams** are used in every FLEXIMA® mattress – specially developed for a perfect balance of ergonomics and comfort. Thanks to antibacterial additives and the targeted use of natural raw materials, they are particularly hygienic, durable, and sustainable.

A fine fleece layer on the surface also creates a pleasant air cushion between the foam and cover – for an optimized sleeping climate. All foams are “crushed” before use: This process exposes the material to high pressure to eliminate trapped air bubbles from manufacturing. The result: the foam becomes especially breathable and dimensionally stable.

Depending on the desired firmness level, the foam density ranges from 42 to 55 kg/m³.



Our most robust foam is used for the **Superior firmness level** – ideal for higher body weights.

THE BENEFITS AT A GLANCE:

- **Point-elastic comfort** for ideal body adaptation
- **Antibacterial & hygienic** thanks to special additives
- **Partly natural materials** for sustainability
- **Maximum breathability** via “crushing” process
- **Durable & dimensionally stable** – even with intensive use
- **Various firmness levels** for personalized comfort
- **100% pollutant-free** – tested and certified



UNBEATABLE ADVANTAGES

FLEXIMA[®] LAYER BY LAYER

Luxurious sleep comfort

Hundreds of point-elastic spring elements support the body in any sleeping position and relieve the spine.

Metal-free core

FLEXIMA[®] spring elements do not corrode and do not amplify electromagnetic fields in the sleeping area.

Certified materials

All components of a FLEXIMA[®] mattress are OEKO-TEX[®] 100 certified.

Antiallergic

The high-quality TENCEL[®] covers are washable at 60°C and suitable for allergy sufferers.



FLEXIMA[®] PREMIUM

22 cm mattress height

Available in all firmness levels.

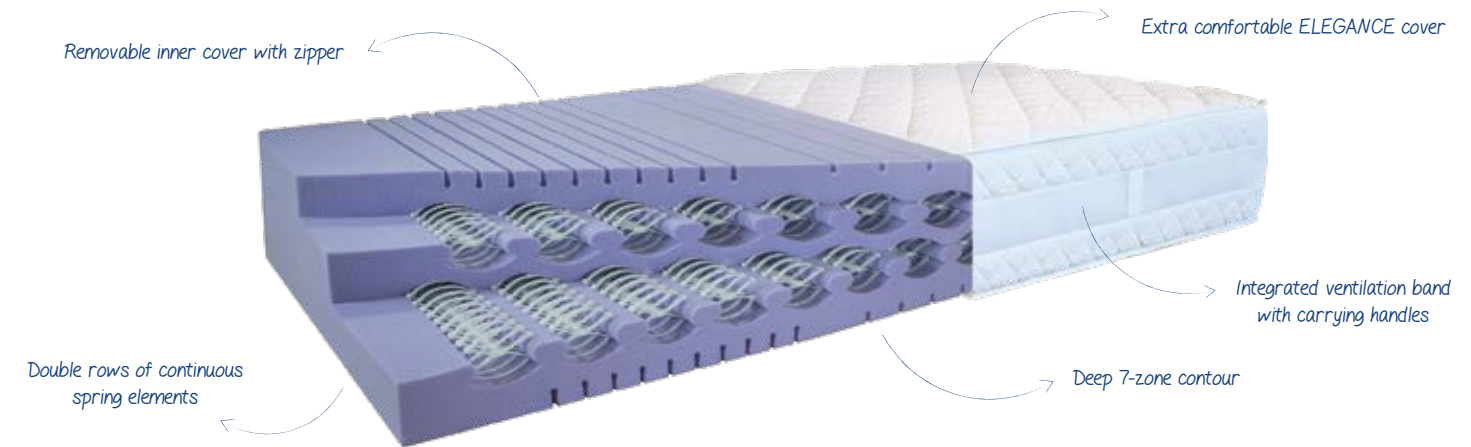
Deep 7-zone contour.



FLEXIMA[®] COMFORT

18 cm mattress height

Available in all firmness levels.
7-zone contour adapted to the height.



FLEXIMA[®] DE LUXE

30 cm mattress height

The ultimate luxury for boxspring beds.
Available in soft, medium and firm.

FLEXIMA® SOFTTOPPER

The ultimate addition for extra soft sleeping comfort.



Total height: approx. 8 cm

Foam core: Extra soft watergel foam.

Cover: TENCEL® blend quilted with 200 g climate fleece, partially washable at 60°C.

Inner cover: Cotton blend, also partially washable at 60°C.

FIRMNESS LEVEL SUPERIOR

FLEXIMA® MATTRESSES ALSO AVAILABLE FOR INDIVIDUALS OVER 140 KG

If you demand more from yourself, you can't settle for standard products.

Especially for a healthy night's sleep, people with a higher body weight need the right support every night.

Otherwise, not only the bed system but also the spine will sag.



ACCESSORIES

FLEXIMA® FITTED SHEETS – FIT MEETS QUALITY

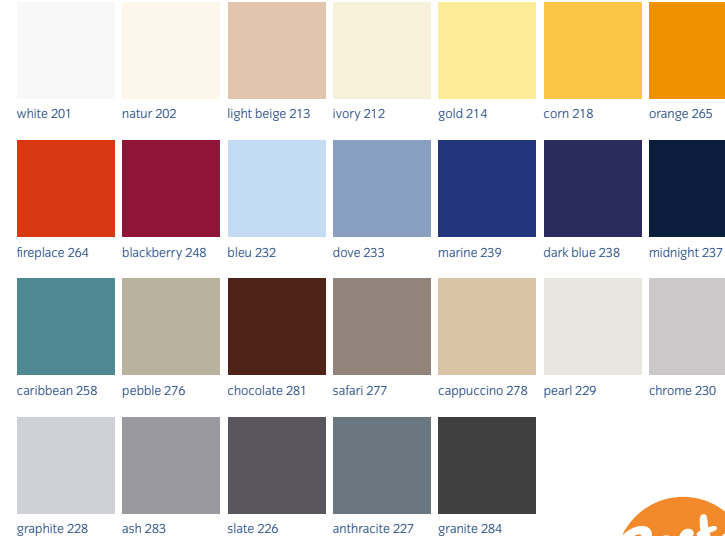
Our high-quality fitted sheets are made of 95 % cotton and 5 % elastane – for a perfect fit and pleasant comfort.

With a fabric weight of approx. 220 g/m², they are particularly shape-retaining and durable.



Colorfast, washable at 60°C (white up to 95°C), pollutant-tested according to **OEKO-TEX® Standard 100** – ideal for allergy sufferers.

Available in extended height for mattresses up to **40 cm** – perfect for FLEXIMA® De Luxe and softtoppers.



Color variations possible.



A broader selection of colors for pillowcases and fitted sheets is available on our homepage.





MATTRESS PROTECTORS

To protect your FLEXIMA® mattress, we recommend a high-quality mattress protector made from a TENCEL® blend.

Normal: Quilted with climate fleece, washable up to 60°C.
Waterproof: Unquilted, washable up to 95°C.

DUVETS & PILLOWS

Lyofill duvets and pillows stand out for their lightness, exceptional moisture and heat regulation, and skin-friendliness.

Available as **summer**, **mono**, or **4-season duvets**.



FLEXIDROP



The Flexidrop pillow offers active relief for the cervical spine thanks to integrated spring elements – the perfect choice for neck pain.

Size	60 x 35 cm
Heights	11 - 5 cm, 13 - 5 cm
Firmness	Soft, Fest

VISCOKISSEN

Wonderfully breathable and viscoelastic pillows with excellent comfort – also available in **practical roll-up travel bags**. The pillows are perceptibly ventilated with every movement, offering pleasant adaptability without sweating.




Models	Luftikiss	Visconeck	Sapocino
Size	70 x 40 x 12 cm	70 x 40 x 12 cm	50 x 35 x 12 cm

INFORMATION

FLEXIMA® MATTRESSES
ALSO FOR NAUTIC & CARAVAN

Find detailed information on our FLEXIMA® NAUTIC and FLEXIMA® CARAVAN lines on our website www.flexima.com, including our online shop with many exciting products from the Matratzen Manufaktur GmbH.



NOTES

Imprint
We reserve the right to change our products and their specifications, functionality and design, without further notice. All images and descriptions may differ from the original. Our website provides you with our terms and conditions.

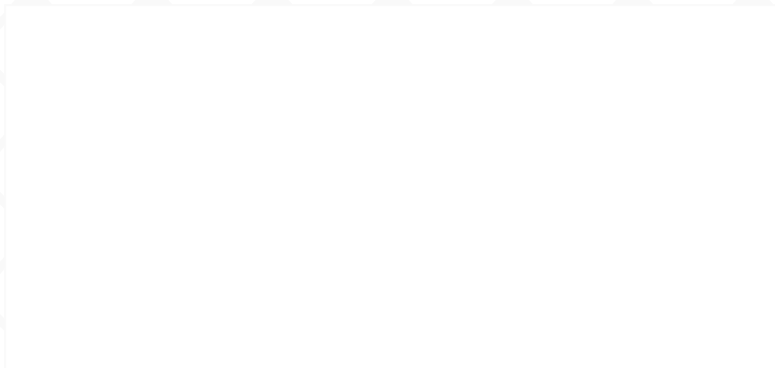
Concept & Design: Jessica Uggowitzer Photos: MM GmbH | Rene Knabl
For errors, technical mistakes and misprints no liability is assumed.



	Comfort	Premium	Deluxe
Height	18 cm	22 cm	30 cm
7-Zones	●	●	●
soft – 70 kg	●	●	●
medium – 90 kg	● – 70 kg	●	●
firm – 110 kg	● – 100 kg	●	●
superior* > 110 kg	● > 100 kg	●	

* Weight / m² + 20%

www. FLEXIMA® .com



You can purchase our FLEXIMA® mattresses online via our webshop, directly at our factory showroom in Austria or the Netherlands, including the opportunity to try out the mattresses on-site or through one of our retail partners near you.

MM Matratzen Manufaktur GmbH, Framrach 51, A - 9433 St. Andrä, T: +43 4358 28 482, office@flexima.com
FLEXIMA® Benelux B.V., Hulsenboschstraat 21-D, NL - 4251 LR Werkendam, T: +31 6 37 34 67 99, info@flexima.com